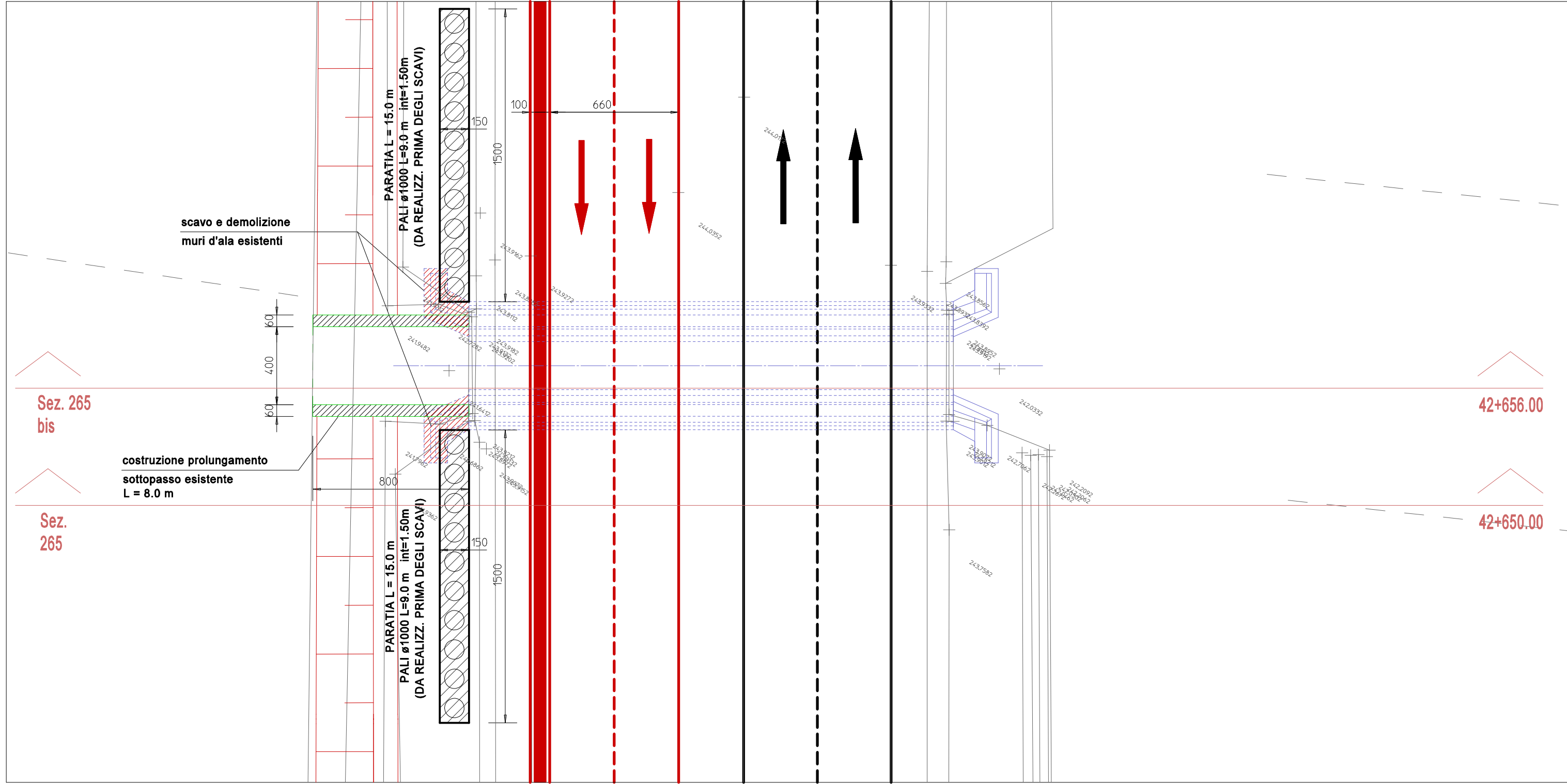
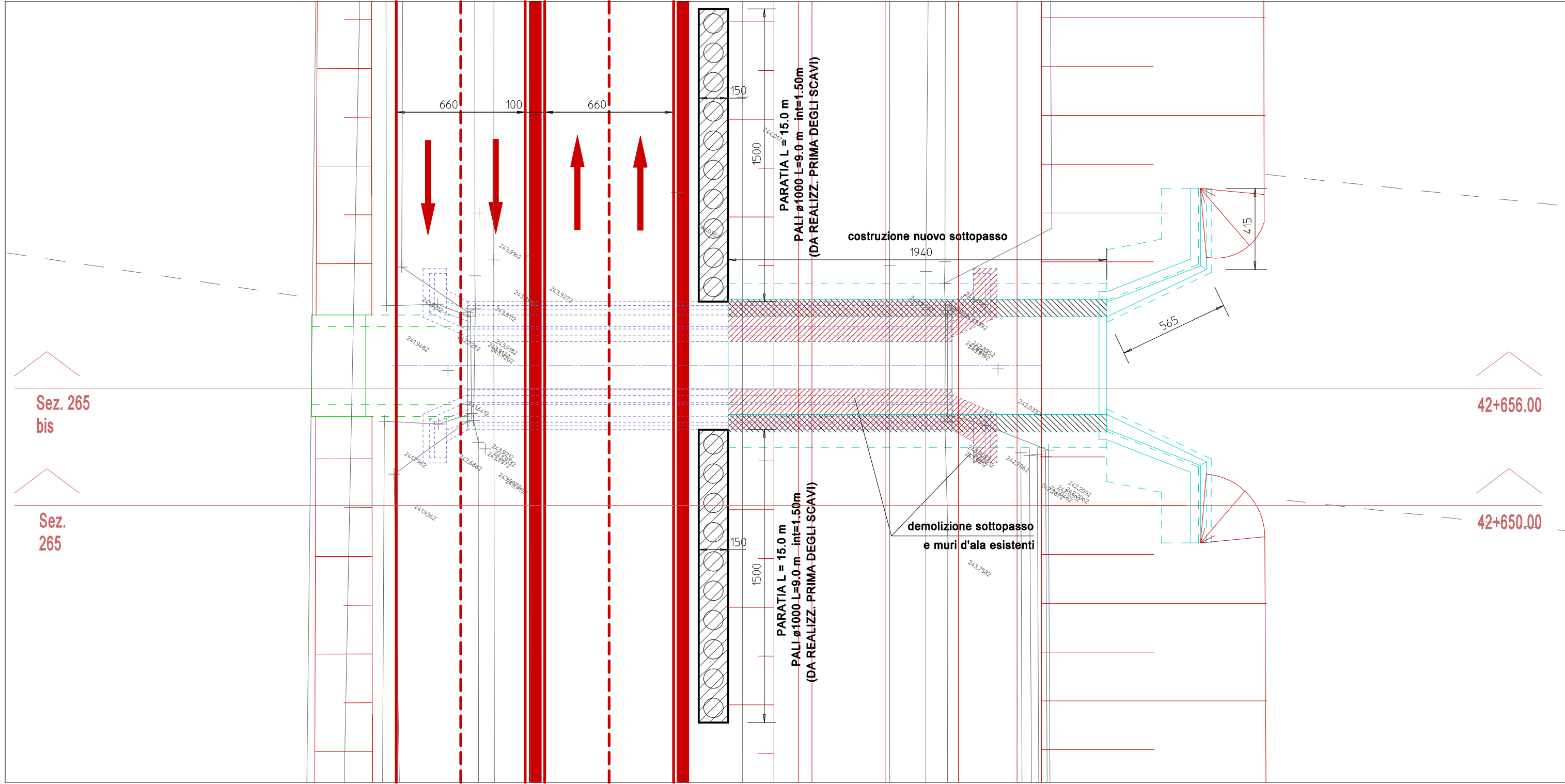


FASE 2

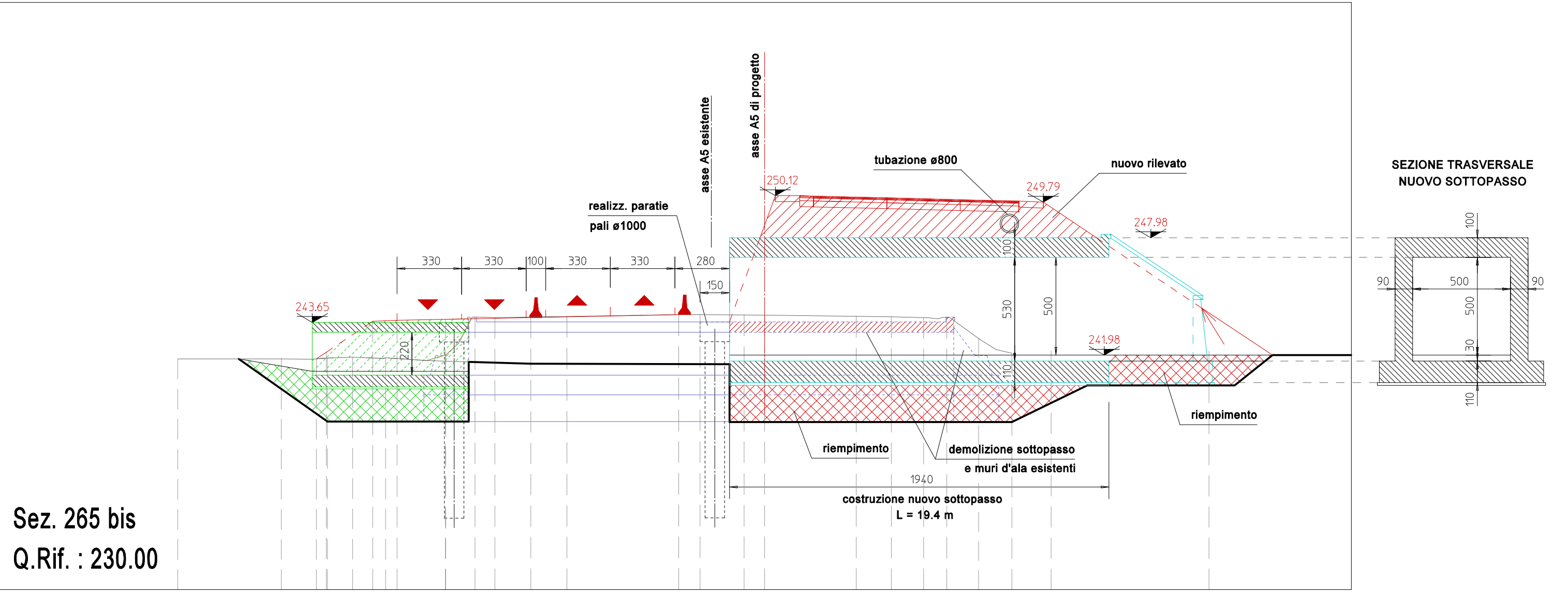
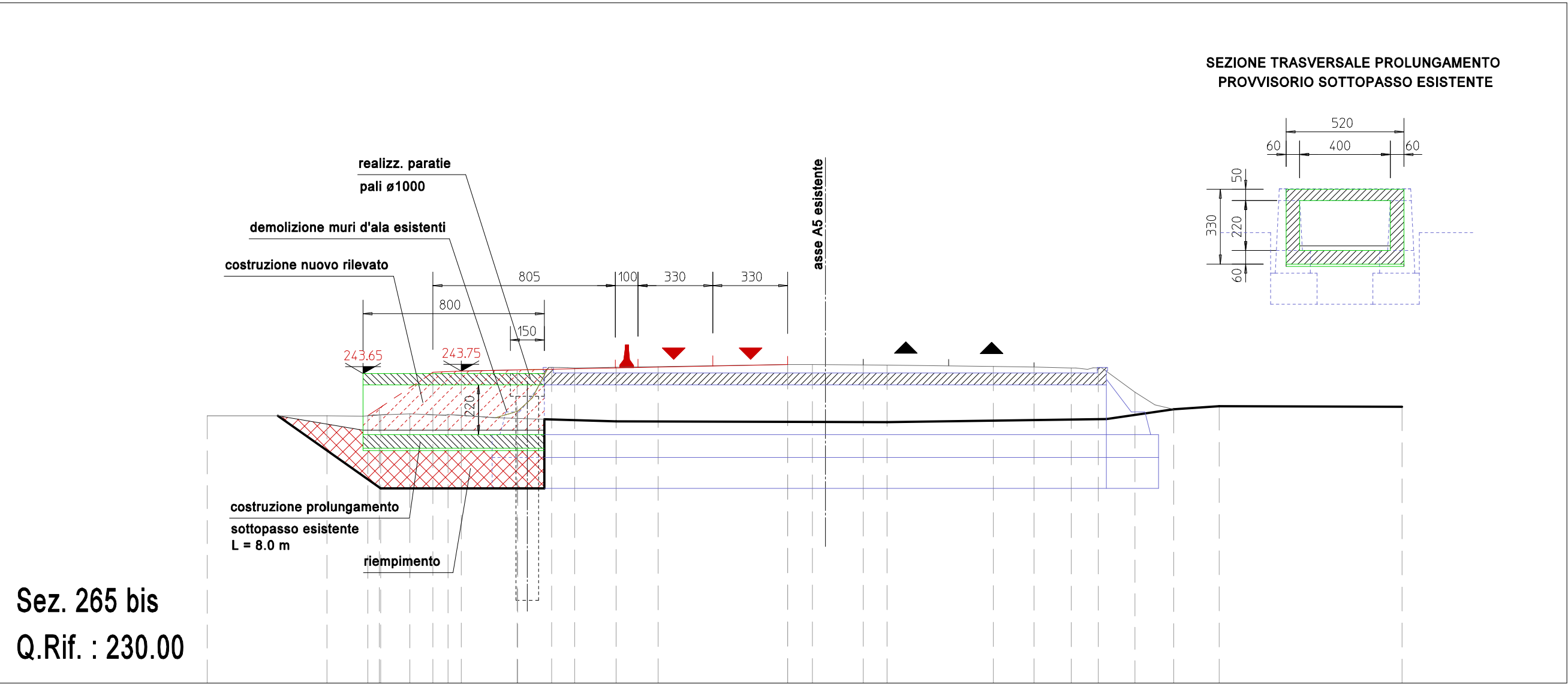
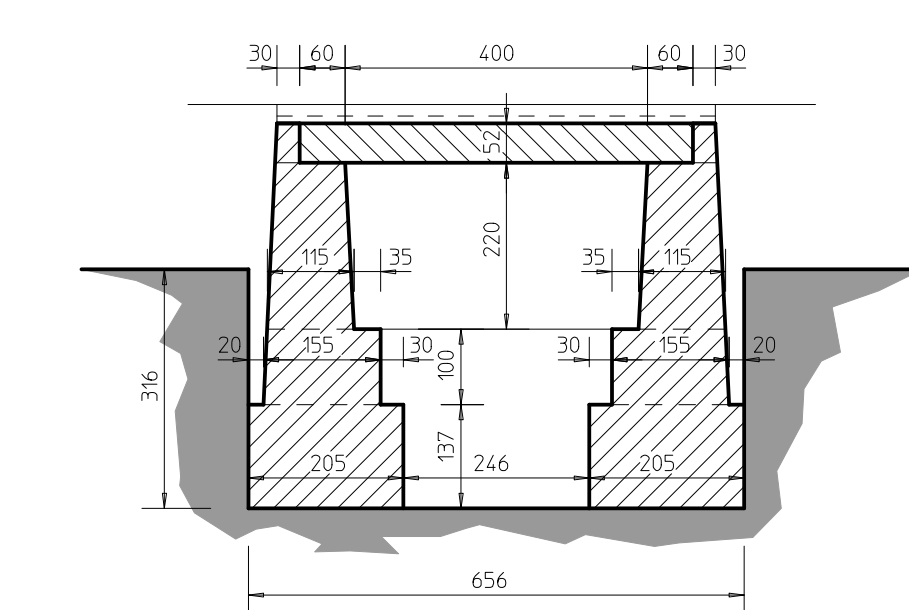


FASE 4



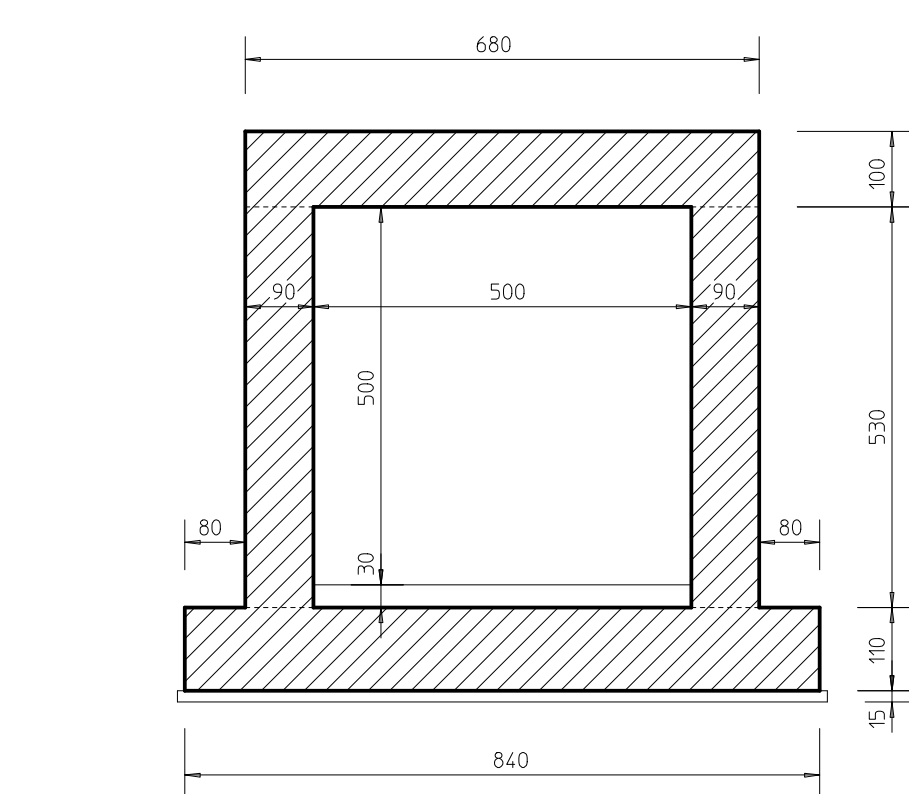
SEZIONE TIPO SOTTOPASSO ESISTENTE

SCALA 1 : 100

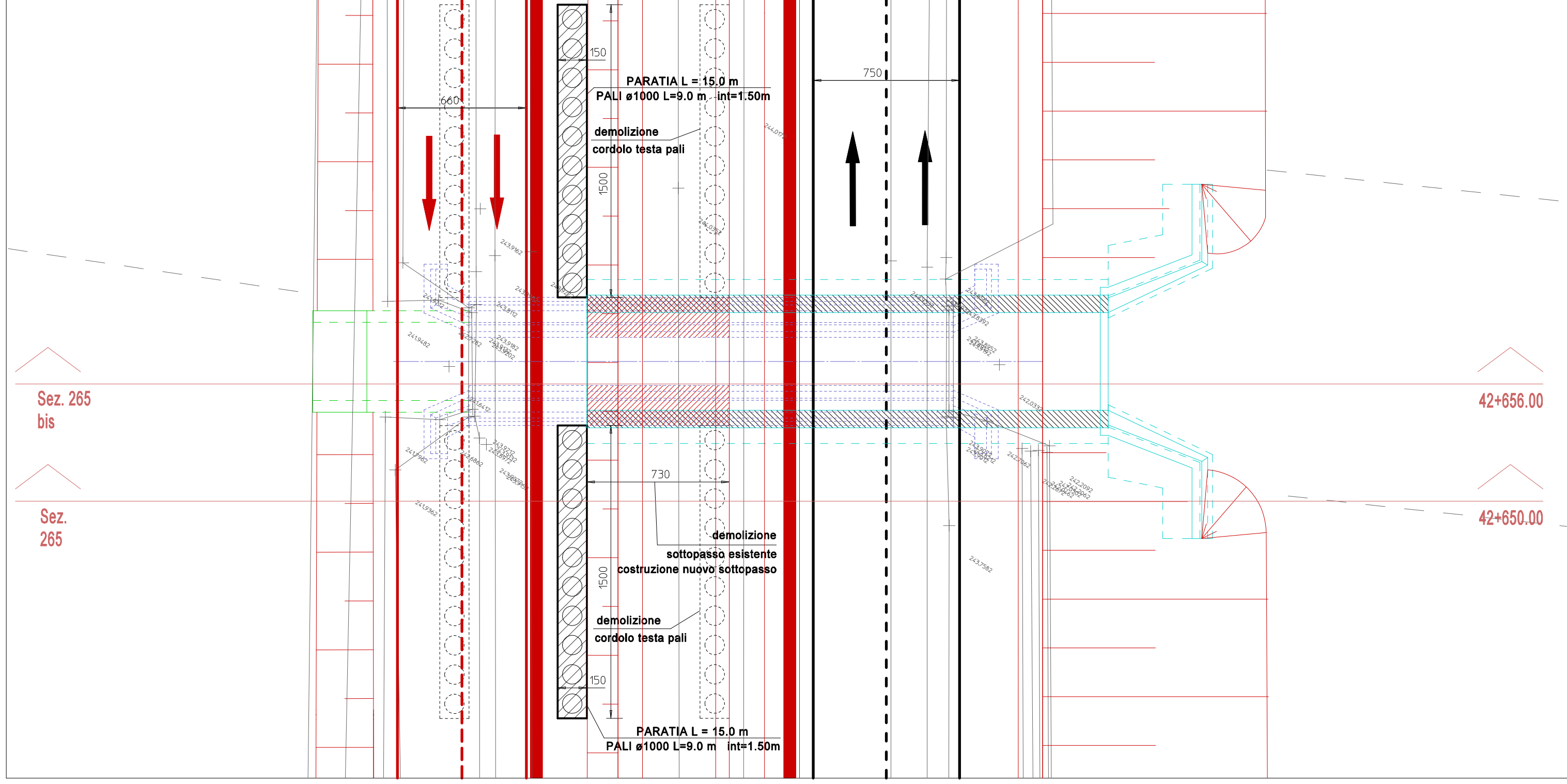


SEZIONE TIPO NUOVO SOTTOPASSO

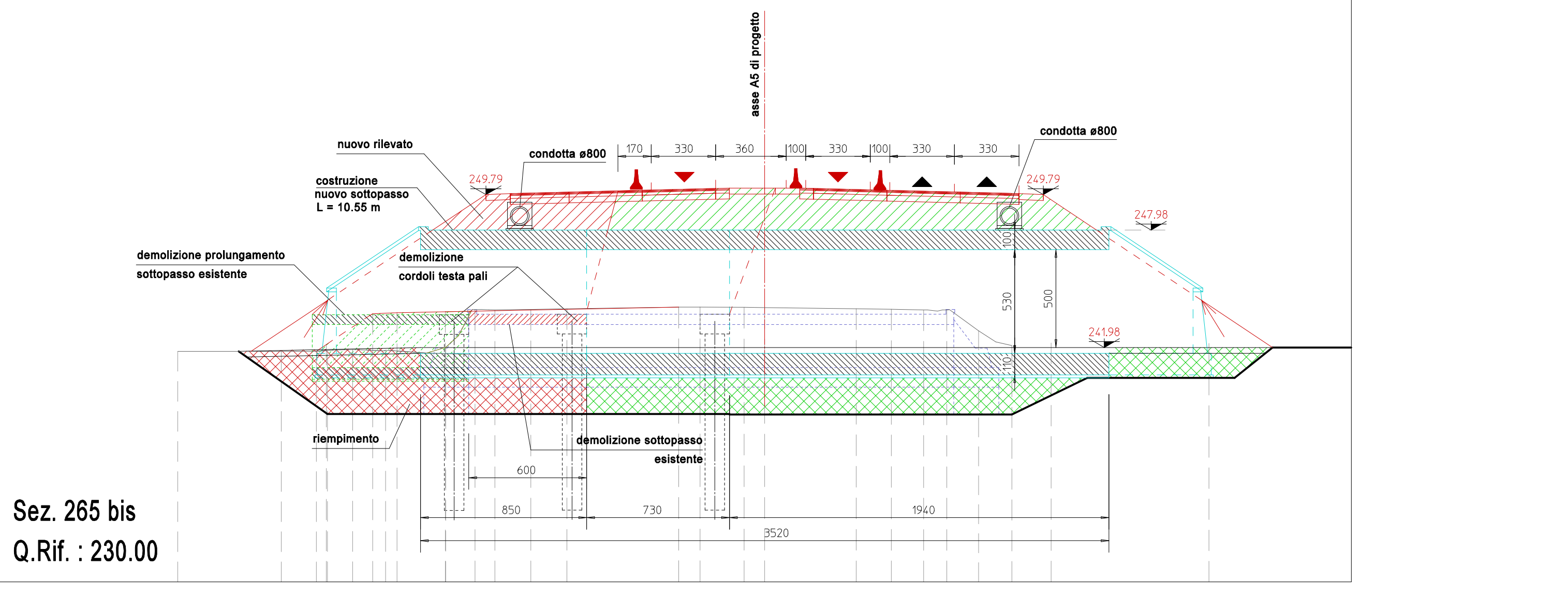
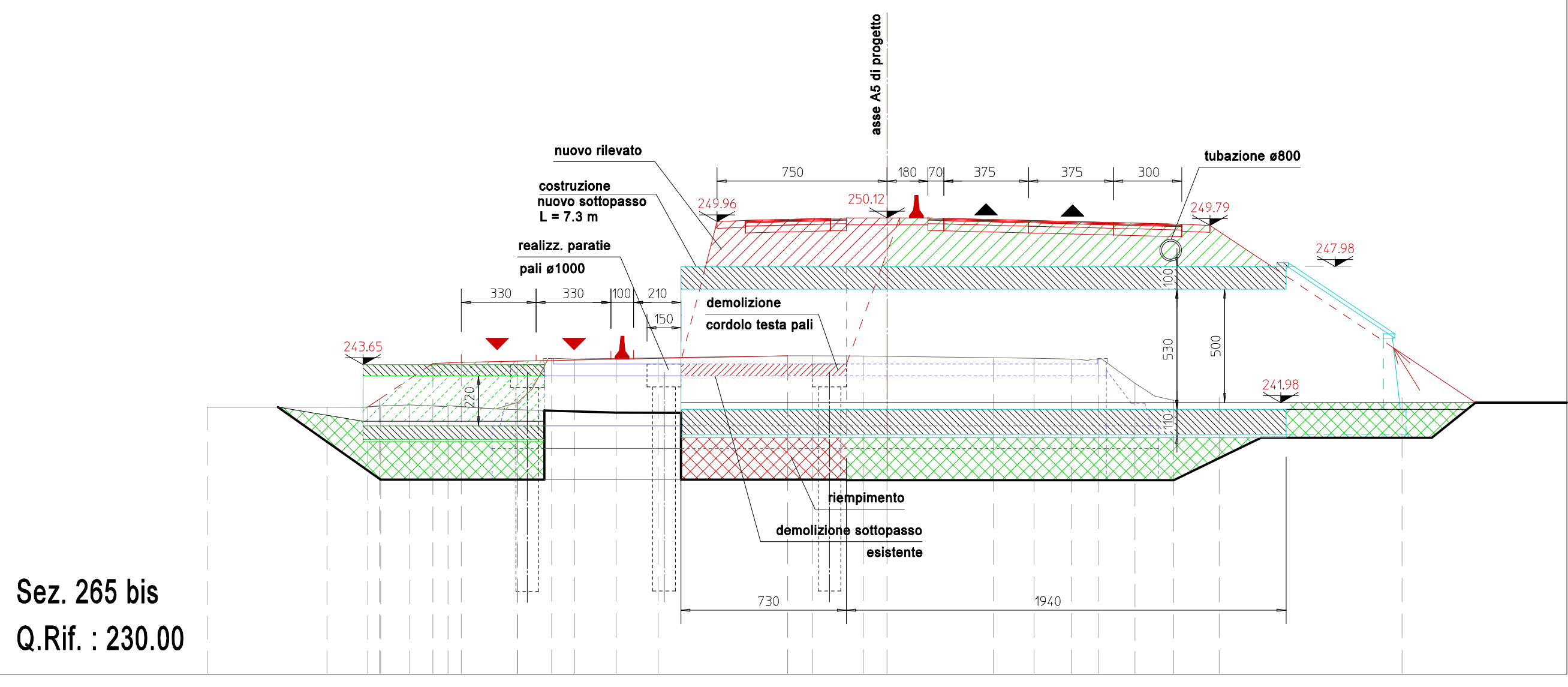
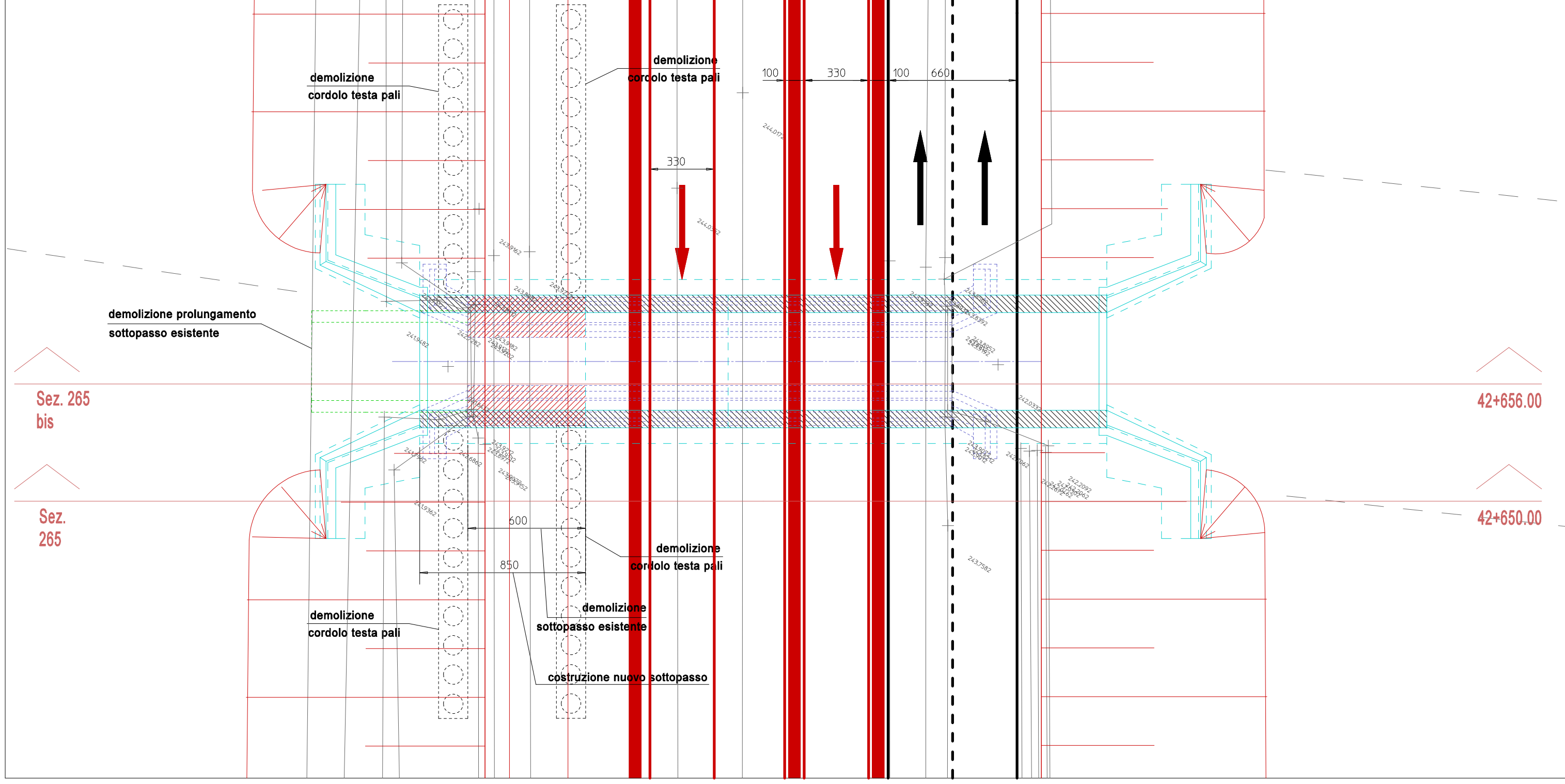
SCALA 1 : 100



FASE 5



FASE 6



TORINO - IVREA - QUINCINETTO
IVREA - SANTHIA'
SISTEMA AUTOSTRADALE
TANGENZIALE DI TORINO

VISTO per FATMA S.p.A.

Amministratore Delegato
Dott. Ing. LUIGI CRESTA

**AUTOSTRADA A4/A5 - A5 TORINO QUINCINETTO
IVREA SANTHIA'**

**NODO IDRAULICO DI IVREA
2° FASE DI COMPLETAMENTO**

PROGETTO DEFINITIVO

**PARTE STRUTTURALE - SOVRAPPASSI E SOTTOPASSI
SOTTOPASSO AL km 42+656
DISEGNO D'INSIEME**

IL PROGETTISTA	REDATTO	CONTROLLATO	APPROVATO
<p>ATA ENGINEERING</p>	IGEAS P. Einaudi	IGEAS M. Barale	ATIVA ENGINEERING V. Palmisano
DATA	GIUGNO 2012	REVISIONE	DATA
SCALA	1 : 200		
Il Direttore Tecnico Dott. Ing. ROBERTO PETRALI ordine degli Ingegneri di Milano n° 14638	UFFICIO	COMESITA	N° PROG.
			FASE
			ARGOMENTO
			N° ELABORATO
			REV

SSP0101A0500PDSTR42200--